

Iconic Delano **PRICE REDUCED!** Multi-Tenant Building For Sale



**1700-1704 W. Douglas
Wichita, KS**

Sale Price \$595,000



PROPERTY INFORMATION

Building Size	15,268 SF	Lot Size	19,844 SF
Zoning	Gen. Commercial	2018 RE Taxes	\$6,219.28
Ceiling Height	Main Floor: 16 FT 2nd Floor: 10 FT	Year Built	1928

Scan or Click Here
For Virtual Tour >>



AMENITIES

- ◆ Located in Historic Delano Dist.
- ◆ Beautiful Brickwork
- ◆ Hardwood Floors
- ◆ Tin Ceilings
- ◆ Street & Private Parking
- ◆ Prime for Redevelopment
- ◆ 3-Phase Electric
- ◆ Separately Metered Units
(4 Gas, 4 Electric, 3 Water)
- ◆ Currently Occupied Month-to-Month



FOR A TOUR OR ADDITIONAL INFO:

**Carl Hebert, CCIM (316) 618-1100
cjhebert@InSiteRE.com**



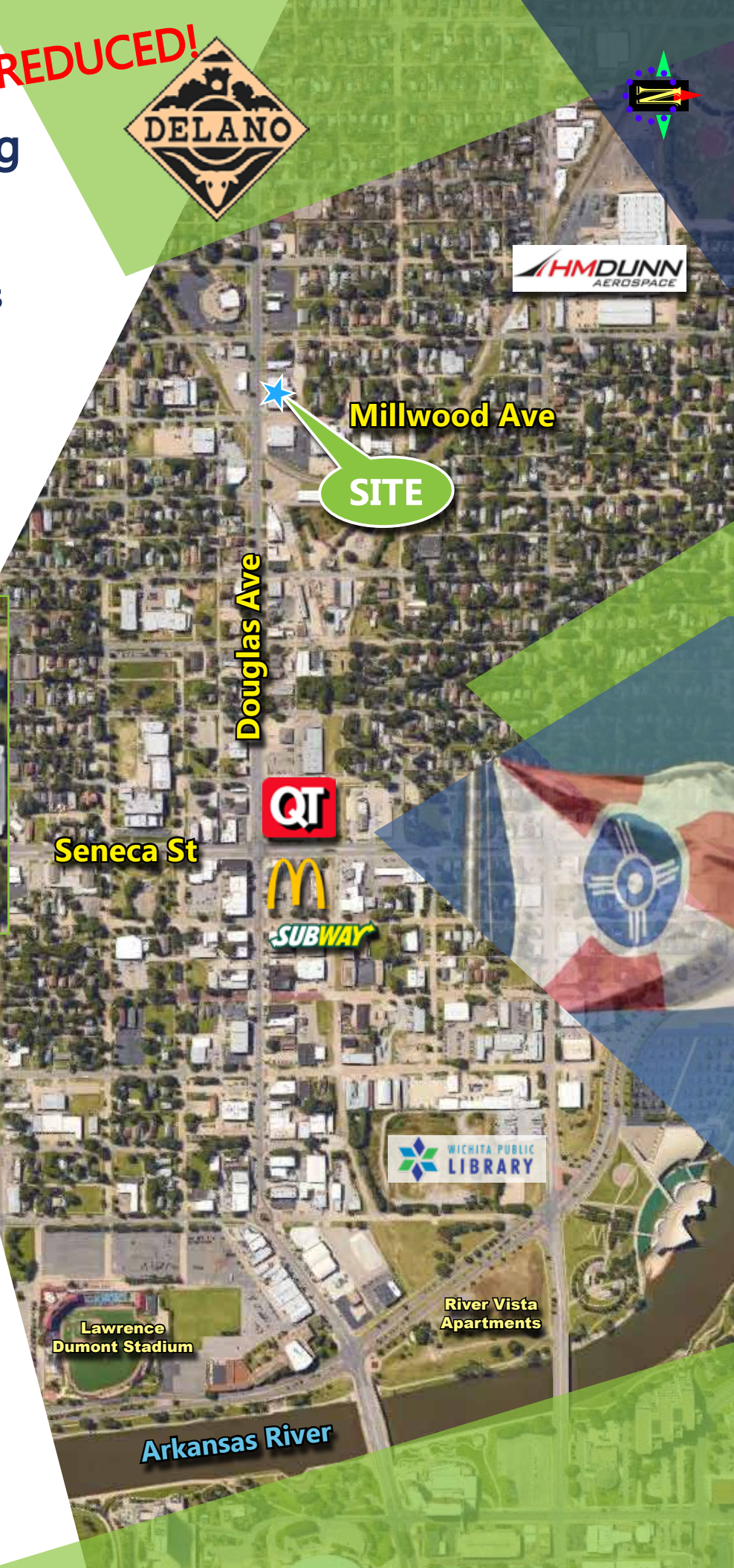
InSite
Real • Estate • Group

Iconic Delano **PRICE REDUCED!** Multi-Tenant Building For Sale



1700-1704 W. Douglas
Wichita, KS

Sale Price **\$595,000**



Scan or Click Here
For Virtual Tour >>



FOR A TOUR OR
ADDITIONAL INFO:

Carl Hebert, CCIM
(316) 618-1100
cjhebert@InSiteRE.com

InSite
Real Estate Group

